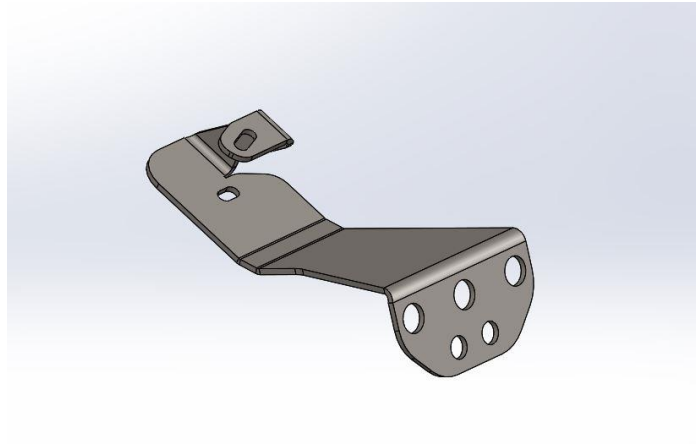


2019 Dodge RAM Dash Bracket Installation Guide

This guide will assist you in the installation of the cable control **Hydrabed** dash bracket for the 2019 Ram trucks. Please read all instructions thoroughly.



1. Locate and remove the 7mm bolt at the lower left dash panel to the left of the truck diagnostic plug. **Figure 1**

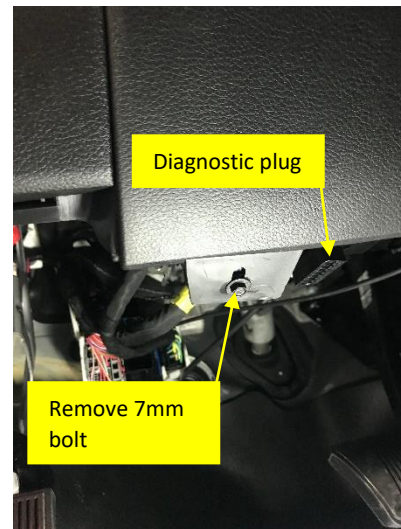


Figure 1

2. Locate the 'J' shaped metal bracket under the dash to the left of the diagnostic plug and pull out the plastic wire loom clip in the hole of the bracket. **Figures 2 & 3**

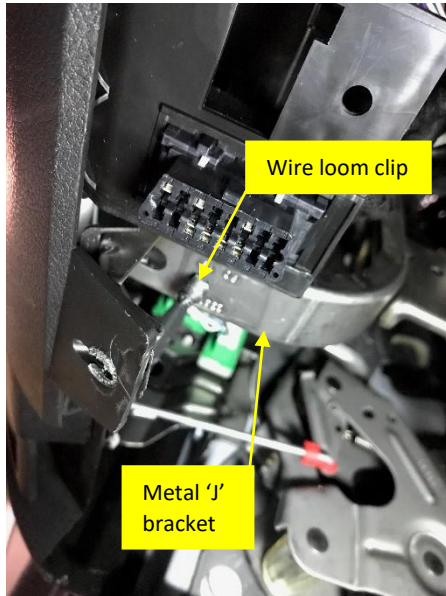


Figure 2

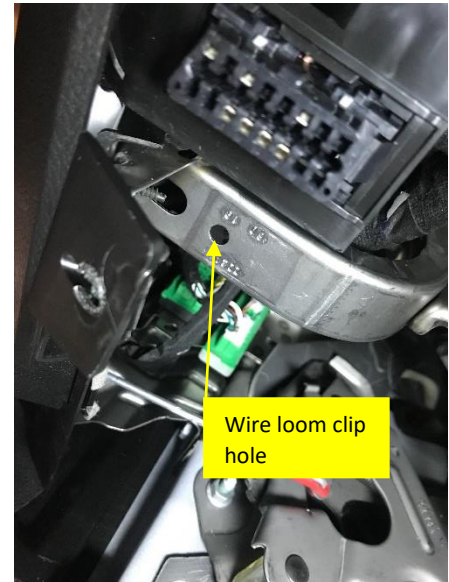


Figure 3

3. Position the **Hydrabed** dash bracket as shown in the pictures and replace the 7mm bolt back into the hole that it was removed from in the plastic dash panel. Leave the bolt loose to aid in the installation of the mounting bolt. The hole in the tab of the **Hydrabed** dash bracket should line up with wire loom clip hole. **Figures 4 & 5**

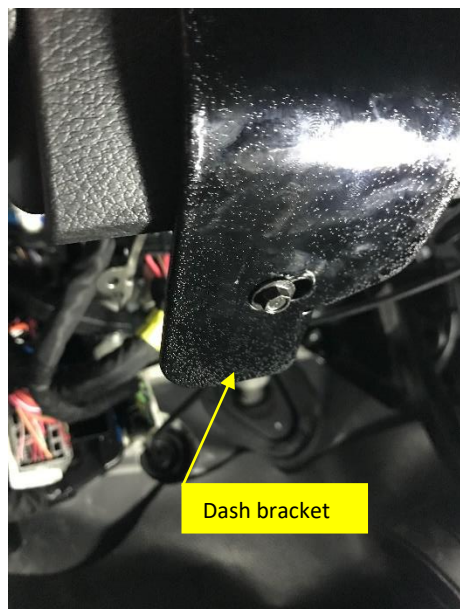


Figure 4

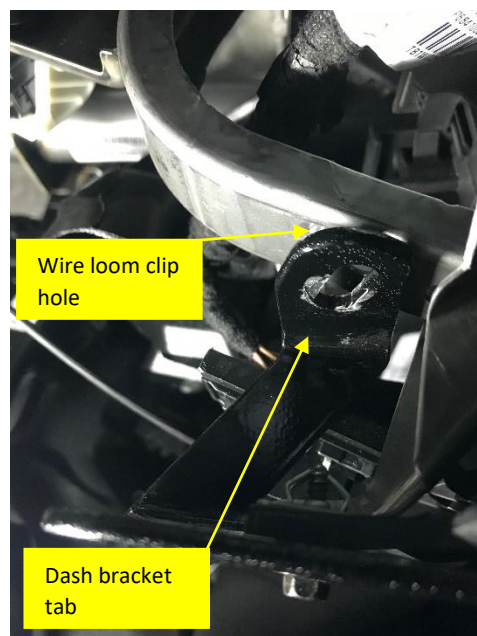


Figure 5

4. Place a 1/4 x 1" bolt through the Hydrabed dash bracket and into the wire loom clip hole. Place a nut on the bolt, straighten the Hydrabed dash bracket, tighten the nut and tighten the 7mm bolt. **Figure 6**



Figure 6

5. Pull the floor mat/carpet back away from the left corner of the floor to expose the metal floor. Locate the slot shaped extrusion in the floor and use a utility knife or something to cut holes for the **Hydrabed** control cables. **Figure 7**

WARNING: Before any cutting or drilling, check the area underneath for any wires or harnesses and position them out of the way.

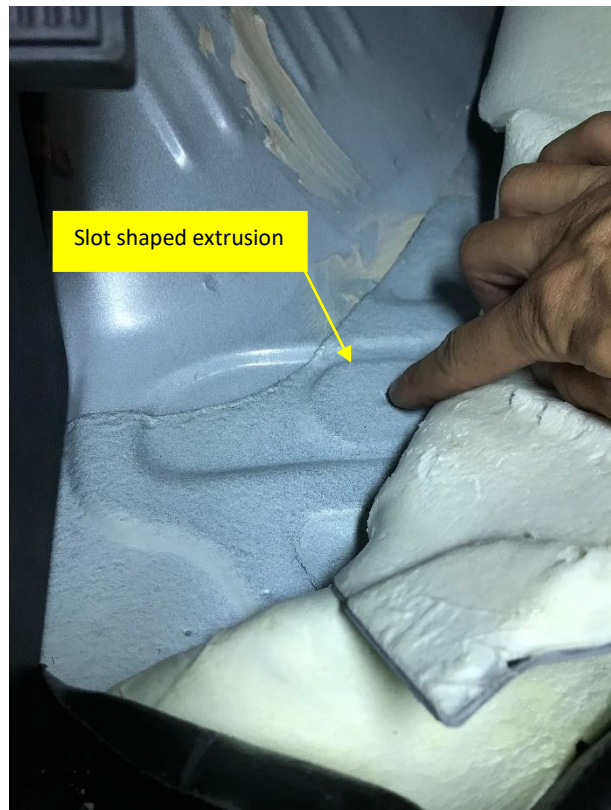


Figure 7

6. After the control cables have been routed and connected to the valve clevises, pull some of the loose cables into the cab to form a large arc under the dash to get them out of the way of the driver and use a zip tie to secure them in place. **Figure 8**

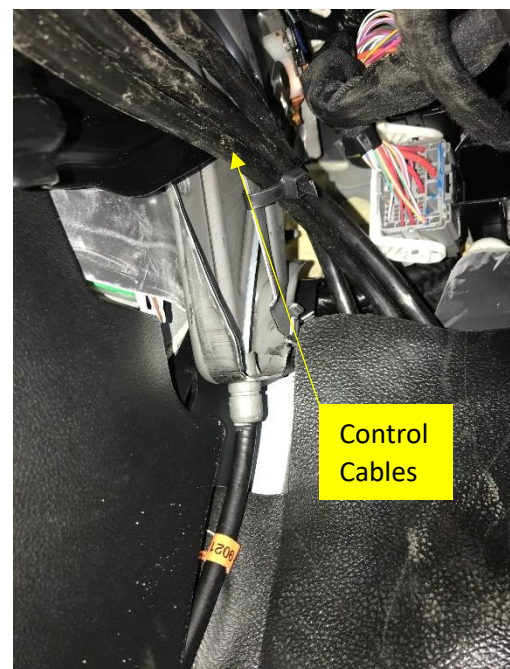


Figure 8